



CH-3003 Bern, BVET, hoc

A-Post  
IG Blauzungenimpfung  
Postfach 30  
7558 Strada

Ihr Zeichen:  
Unser Zeichen: hoc  
Sachbearbeiter/in: Hansueli Ochs  
Bern-Liebefeld, 12. März 2009

### **Antwort auf offenen Brief**

Sehr geehrte Damen und Herren

Wir haben Ihren offenen Brief erhalten und Verständnis für Ihre Verunsicherung. Die von Ihnen beschriebenen Gesundheitsprobleme können sehr viele Ursachen haben und kommen dementsprechend häufig in Nutztierbeständen vor. Bei der Impfung von 1.5 Millionen Tieren können viele dieser Ereignisse zeitlich zusammenfallen. Die zeitliche Nähe von unerwünschten Beobachtungen zum Impfzeitpunkt ist noch lange kein Beweis für einen ursächlichen Zusammenhang. Daher ist es sehr wichtig, dass solche Vorkommnisse näher abgeklärt werden, um andere Ursachen auszuschliessen. Wenden Sie sich diesbezüglich bitte an Ihre Tierärztin oder Ihren Tierarzt.

Im folgenden nehmen wir Stellung zu Ihren spezifischen Fragen:

- Die Blauzungenkrankheit wird durch Viren ausgelöst. Zum ersten Mal wurde sie 1876 in Südafrika beschrieben. Bereits 1906 entdeckte der bekannte Schweizer Afrikaforscher Arnold Theiler die virologische Ursache dieser Tierseuche. Weitere Informationen zum Erreger und zur Krankheit finden Sie auf [www.bluetongue.ch](http://www.bluetongue.ch) und in der zahlreichen Fachliteratur.
- Bei der Produktion des Impfstoffes werden keine genveränderten Organismen eingesetzt und Schwermetalle sind nicht enthalten.
- Der Impfstoff enthält abgetötete Viren, die in den Tieren keine Zellen mehr befallen können und somit auch keine genetischen Veränderungen bewirken, im Gegensatz zum natürlich vorkommenden Virus.
- Der zugelassene Impfstoff wurde bei trächtigen Tieren ausreichend geprüft und hat keine negativen Auswirkungen auf die Trächtigkeit oder Neugeborenen gezeigt.

- Durch die Benutzung der gleichen Injektionskanüle bei mehreren Tieren können gewisse Krankheitserreger übertragen werden. Um die Risiken gering zu halten ist vorgeschrieben die Kanüle mindesten von Bestand zu Bestand auszuwechseln. Tierärzte können die Kanüle auch öfters wechseln, wenn dies angezeigt ist.
- Für Ereignisse in zeitlicher Nähe zur Impfung kann rechtlich keine generelle Haftung oder Entschädigung in Anspruch genommen werden. Um Entschädigungen geltend machen zu können, müsste ein ursächlicher Zusammenhang zwischen Schaden und Verursacher nachgewiesen und andere in Frage kommenden Ursachen ausgeschlossen werden. Im konkreten Fall müssen Sie sich an den Kanton wenden.
- Der Impfstoff besteht aus dem inaktivierten Virus der Blauzungenkrankheit, den Zusatzstoffen Aluminiumhydroxid und Saponin (ein Extrakt aus Eichenrinde) sowie Wasser. Diese Zusätze sind unerlässliche Bestandteile, damit ein guter Infektionsschutz erreicht werden kann. Beide Substanzen werden seit langem als Impfstoffbestandteile verwendet, deshalb liegt auch eine langjährige Erfahrung damit vor. In der Verordnung des EDI über Fremd- und Inhaltsstoffe in Lebensmitteln sind keine Grenzwerte festgelegt worden, weil beide Stoffe in den angewendeten Mengen nicht als toxisch erachtet werden.
- Produktinformationen zum Impfstoff "BTVPUR AlSap 8" von Merial finden Sie im Tierarzneimittelkompendium unter [www.vetpharm.uzh.ch](http://www.vetpharm.uzh.ch).

Erfolgreiche Tierseuchenbekämpfung setzt die Solidarität aller voraus. Durch den grossen Einsatz aller Beteiligten bei der diesjährigen Impfkampagne besteht weiterhin die berechtigte Hoffnung, die Blauzungenkrankheit wieder aus der Schweiz zu verbannen.

Freundliche Grüsse



H. Ochs

Tiergesundheit

Beilage: Publikation von J.-F. Toussaint et al. (2007); Bluetongue in Belgium, 2006; Emerging Infectious Diseases, Vol. 13, No. 4, S. 614-616.

# Bluetongue in Belgium, 2006

Jean-François Toussaint,\* Corinne Sailleau,†  
 Jan Mast,\* Philippe Houdart,‡ Guy Czaplicki,§  
 Lien Demeestere,\* Frank VandenBussche,\*  
 Wesley van Dessel,\* Nesya Goris,\*  
 Emmanuel Bréard,† Lotfi Bounaadja,†  
 Etienne Thiry,¶ Stephan Zientara,†  
 and Kris De Clercq\*

Bluetongue has emerged recently in Belgium. A bluetongue virus strain was isolated and characterized as serotype 8. Two new real-time reverse transcription–quantitative PCRs (RT-qPCRs) that amplified 2 different segments of bluetongue virus detected this exotic strain. These 2 RT-qPCRs detected infection earlier than a competitive ELISA for antibody detection.

Bluetongue is a noncontagious disease caused by an orbivirus of the family *Reoviridae*. The bluetongue virus (BTV) serogroup consists of 24 serotypes. BTV is transmitted by arthropods of the genus *Culicoides* and its distribution worldwide is restricted to regions that contain competent vectors (1). An outbreak of bluetongue was reported and confirmed in the Netherlands on August 17, 2006 (2). Belgium reported its first cases of bluetongue 1 day later, and Germany and France reported outbreaks on August 21, 2006, and August 31, 2006, respectively (2,3). We report detection and characterization of a BTV strain and an overview of laboratory test results 4 weeks after the onset of the outbreak.

## The Study

Twenty-one animals (16 cattle and 5 sheep) showing clinical signs suggestive of bluetongue were sampled by the Federal Agency for the Safety of the Food Chain on August 18, 2006, at 11 farms in northeastern Belgium. Two serologic tests that detect antibodies against the major serogroup antigen VP7 (bluetongue virus antibody competitive ELISA [cELISA]; Veterinary Medical Research and Development Inc., Pullman, WA, USA and competitive vp7 bluetongue kit; IDVET, Montpellier, France) identified 21 virus-positive animals. Two newly developed and validated reverse transcription–quantitative PCRs (RT-

qPCRs) that detected BTV strains representing the 24 serotypes (4) were then conducted to determine whether these seropositive animals also had viral RNA. The first assay (RT-qPCR\_S1), which amplified a 357-nt fragment in segment 1, detected virus in erythrocytes of the 21 seropositive animals (mean cycle threshold [Ct] value 29.0). The second assay (RT-qPCR\_S5), which amplified a 94-nt fragment in segment 5, detected virus in the same 21 seropositive animals (mean Ct value 26.5). The 2 serologic tests and the 2 molecular assays detected BTV in 21 animals from 11 Belgian farms within 14 hours.

Virus isolation was conducted on August 18, 2006, by injection of blood from infected sheep into 11-day-old embryonated chicken eggs, followed by passage on BHK-21 cells (ATCC-CCL10) as previously described (5). The specificity of the cytopathic effect observed 48 hours after passage on BHK-21 cells was confirmed by RT-qPCR and electron microscopy (Figure 1) after fixation and negative staining as previously described (6). Two virus neutralization tests were conducted on 2 virus strains isolated by the Belgian and the French reference laboratories at 2 Belgian farms 30 km apart. The 2 BTV isolates were completely neutralized with reference serum for serotype 8. Each strain was also partially neutralized by reference serum against serotype 18, which confirmed cross-neutralization between serotypes 8 and 18 (7).

From August 19, 2006, to September 14, 2006, the study farms were screened for animals with clinical signs of bluetongue. Blood samples were tested by serologic tests or RT-qPCR. For cattle, 97 (68%) of 142 samples had antibodies to BTV and 32 (78%) of 41 samples contained viral RNA (Table 1). However, for sheep, only 23 (29%) of 79 samples had antibodies to BTV and 15 (45%) of 33 samples contained viral RNA. Other diseases that cause similar signs might explain this lower frequency in sheep.

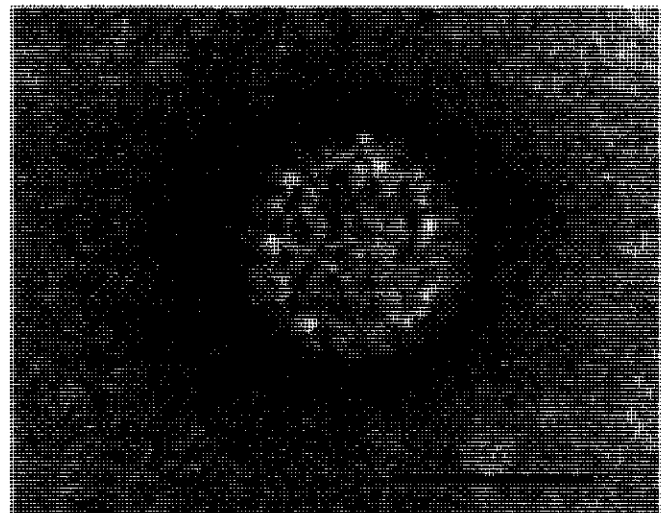


Figure 1. Negatively stained bluetongue virus–like particle that caused a cytopathic effect in BHK-21 cells. Scale bar = 50 nm.

\*Veterinary and Agrochemical Research Centre, Brussels, Belgium; †Agence Française de Sécurité Sanitaire des Aliments, Maisons-Alfort, France; ‡Federal Agency for the Safety of the Food Chain, Brussels, Belgium; §Association Régionale de Santé et d'Identification Animales, Loncin, Belgium; and ¶University of Liège, Liège, Belgium

Table 1. Bluetongue virus infection in cattle and sheep with bluetonguelike clinical signs by IDVET cELISA and RT-qPCR, Belgium, 2006\*

| Test              | Cattle | Sheep |
|-------------------|--------|-------|
| cELISA            |        |       |
| No. negative      | 45     | 56    |
| No. positive      | 97     | 23    |
| % Confirmed cases | 68     | 29    |
| RT-qPCR           |        |       |
| No. negative      | 9      | 18    |
| No. positive      | 32     | 15    |
| % Confirmed cases | 78     | 45    |

\*cELISA, competitive ELISA; RT-qPCR, reverse transcription-quantitative PCR.

Contagious ecthyma was diagnosed by using PCR and electron microscopy for several sheep that showed bluetonguelike signs but did not have antibodies to BTV or viral RNA.

Agreement between cELISA and RT-qPCR results was analyzed for 124 animals (Table 2). One sample negative by RT-qPCR\_S1 and RT-qPCR\_S5 was positive by cELISA. Although this result might reflect lack of specificity of the cELISA, elimination of BTV RNA from the animal several weeks after being infected cannot be ruled out. A false-negative result in the RT-qPCR is unlikely because 1) 2 different RT-qPCRs that amplified 2 different segments were used, 2) the quality of the RNA was confirmed by a third RT-qPCR that quantified mRNA of  $\beta$ -actin, and 3) both RT-qPCRs are highly sensitive (they can detect 0.01 infectious doses of virus) (4). False-positive results were not observed with the IDVET cELISA when we analyzed 650 negative serum samples from artificial insemination centers and field samples collected from Belgian livestock in 2004 and 2005. Thus, the specificity of the cELISA is >99.8%. Seven animals with bluetonguelike clinical signs were positive according to each RT-qPCR but negative according to the cELISA (Table 2). These results support the finding that RT-qPCR can be used to detect viral RNA in infected animals before antibodies are detectable. The clinical signs indicative of a recent infection support this finding.

On September 14, 2006 (4 weeks after the first identification of BTV in Belgium) as many as 84 Belgian farms had at least 1 BTV-infected animal. The maximal distance

between herds in this study was  $\approx$ 110 km (Figure 2A). Most outbreaks were confirmed in the area where the disease was initially detected (area I, Figure 2). Most (64%) infected animals showed a high virus load with individual Ct values <30. Of the remaining animals, 30% had moderate virus loads (Ct values 30–35) and 6% had Ct values >35. The high Ct values for the latter animals might have remained undetected had pooled blood samples been analyzed. Thus, results of pooled samples need to be validated before being used for diagnosis. Distribution of Ct values differed slightly, depending on the origin of the animals. None of the animals from zones III and IV showed a Ct value <30, whereas all animals from zone II showed low Ct values, which are indicative of high virus loads. Lower virus loads and acute clinical signs in animals from zones III and IV might indicate onset of infection. However, we cannot rule out decreased infection in these animals because they also had positive serologic results that indicated infection for at least 4–5 days. Further epidemiologic studies are required before conclusions can be drawn on the evolution of these epidemics.

Table 2. Agreement between results of IDVET cELISA and RT-qPCR\_S5 for bluetongue virus infection, Belgium, 2006\*

| cELISA result | RT-qPCR result† |          |
|---------------|-----------------|----------|
|               | Negative        | Positive |
| Negative      | 75              | 7        |
| Positive      | 1               | 41       |

\*cELISA, competitive ELISA; RT-qPCR, reverse transcription-quantitative PCR.

†Samples with different results in cELISA and RT-qPCR\_S5 were retested with RT-qPCR\_S1 (4). This last test always confirmed the result of the RT-qPCR\_S5.

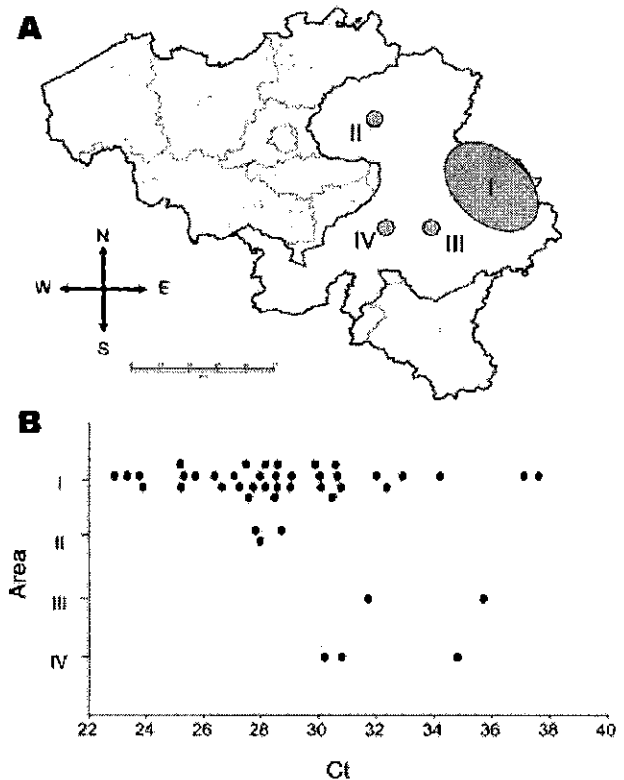


Figure 2. A) Distribution of outbreaks of bluetongue (shaded areas) reported in Belgium from August 18 through September 14, 2006. Area I is where the disease was initially detected. B) Cycle threshold (Ct) values observed in different zones as a result of conducting reverse transcription-quantitative PCR\_S5 on individual blood samples.

### Conclusions

Bluetongue has emerged in some countries of northern Europe. BTV has been detected and its isolation and characterization have considerably progressed in the first weeks of the epidemics. Results of virus neutralization tests for 2 Belgian isolates and molecular characterization of the Dutch BTV strain by the community reference laboratory (8) indicate that BTV serotype 8 is present in Belgium and the Netherlands. Although this observation suggests 1 serotype circulating in northern Europe after a common virus introduction, it must be confirmed by detailed epidemiologic studies. The mechanism of introduction of BTV strain serotype 8 is unknown. Northward spread of bluetongue in Europe has been correlated with climate warming (9). However, BTV serotype 8 has not been found in the Mediterranean basin.

One characteristic of the current epidemics of bluetongue is the severity of clinical signs reported in cattle (10). The present results also demonstrate that clinical signs observed in cattle are more specific than those observed in sheep. Confusing clinical signs in sheep underline the need for developing diagnostic tests to discriminate between bluetongue and other confounding diseases such as contagious ecthyma, border disease, and foot-and-mouth disease. Our results also indicate the usefulness of RT-qPCR, which detected viral RNA in recently infected animals with clinical signs of bluetongue but no detectable antibodies to BTV. The RT-qPCR and ELISA are independent but complementary tests because they detect viral RNA and virus-specific antibodies, respectively. These tests indicated that an outbreak of bluetongue was occurring in Belgium. Despite high sensitivity of RT-qPCR (4), our results suggest that using this test with pooled samples might not detect animals with low viral loads. This possibility should be explored and validated by testing individual and pooled samples. RT-PCR-positive results in animals that are no longer infectious (11) should also be considered before deciding whether pooled samples are acceptable.

Dr Toussaint is a research scientist in the Department of Virology, Veterinary and Agrochemical Research Centre, Brussels, Belgium. His research interests include development, evaluation, and optimization of DNA vaccines against bovine herpesvirus 1, and new tools for detection of bluetongue virus and foot-and-mouth disease virus.

### References

1. Tabachnick WJ. Culicoides and the global epidemiology of bluetongue virus infection. *Veterinaria Italiana*. 2004;40:145-50.
2. OIE Animal Health Department. Bluetongue — Netherlands, Belgium, Germany-OIE. ProMed. August 21, 2006. Accessed at <http://www.promedmail.org>, archive no.: 20060821.2353
3. Communication Directorate General. Bluetongue confirmed in France. EU MIDDAY-express. [cited 2006 Aug 31]. Available from <http://europa.eu.int/rapid>, reference: MEX/06/0831
4. Toussaint JF, Sailleau C, Breard E, Zientara S, de Clercq K. Bluetongue virus detection by two real-time RT-qPCRs targeting two different genomic segments. *J. Virol. Methods*. 2007;140:115-23.
5. Breard E, Sailleau C, Coupier H, Mure-Ravaud K, Hammoui S, Gicquel B, et al. Comparison of genome segments 2, 7 and 10 of bluetongue viruses serotype 2 for differentiation between field isolates and the vaccine strain. *Vet Res*. 2003;34:777-89.
6. Kimpe A, Decostere A, Hermans K, Mast J, Haesebrouck E. Association of *Streptococcus gallolyticus* strains of high and low virulence with the intestinal tract of pigeons. *Avian Dis*. 2003;47:559-65.
7. Erasmus BJ. Bluetongue virus. In: Dinter Z, Morein B, editors. *Virus infections of ruminants*. Amsterdam: Elsevier; 1990. p. 227-37.
8. European Commission Reference Laboratory for Bluetongue. Bluetongue virus in the Netherlands identified as serotype 8 by Institute for Animal Health. ProMed. August 28, 2006. Accessed at <http://www.promedmail.org>, archive no.: 20060828.2448
9. Purse BV, Mellor PS, Rogers DJ, Samuel AR, Mertens PP, Baylis M. Climate change and the recent emergence of bluetongue in Europe. *Nat Rev Microbiol*. 2005;3:171-81.
10. Thiry E, Saegerman C, Guyot H, Kirten P, Losson B, Rollin F, et al. Bluetongue in northern Europe. *Vet Rec*. 2006;159:327.
11. MacLachlan NJ. Bluetongue: pathogenesis and duration of viraemia. *Veterinaria Italiana*. 2004;40:462-7.

Address for correspondence: Kris De Clercq, Department of Virology, Veterinary and Agrochemical Research Centre, Groeselenberg 99, B-1180 Brussels, Belgium; email: [kris.de.clercq@var.fgov.be](mailto:kris.de.clercq@var.fgov.be)

EMERGING INFECTIOUS DISEASES *online*

[www.cdc.gov/eid](http://www.cdc.gov/eid)

To receive tables of contents of new issues send an email to [listserv@cdc.gov](mailto:listserv@cdc.gov) with subscribe eid-toc in the body of your message.